

STURGEON BAY Waterfront Improvements

at Nautical Drive

Public Visioning Session

December 12, 2023



Michigan Maritime Museum, South Haven, MI



Discovery Pier, Traverse City, MI





South Haven Yacht Club, MI



Lexington Harbor, MI



East Tawas Harbor, MI



Sturgeon Bay Waterfront Improvements

Visioning

Baileys Harbor, WI



Project Process

- *Complete Site Assessment*
- *Gather Community Feedback*
- *Develop Concept Alternatives to Explore Options*



Guiding Principles

- *Consider the unique character of Sturgeon Bay and of Door County: Authenticity is key*
- *Consider needs of multiple user groups*
- *Improve access to the waterfront*

- *Listen! What is most important to YOU?*



Project Schedule

Site Inventory and Analysis – Monday, December 11, 2023

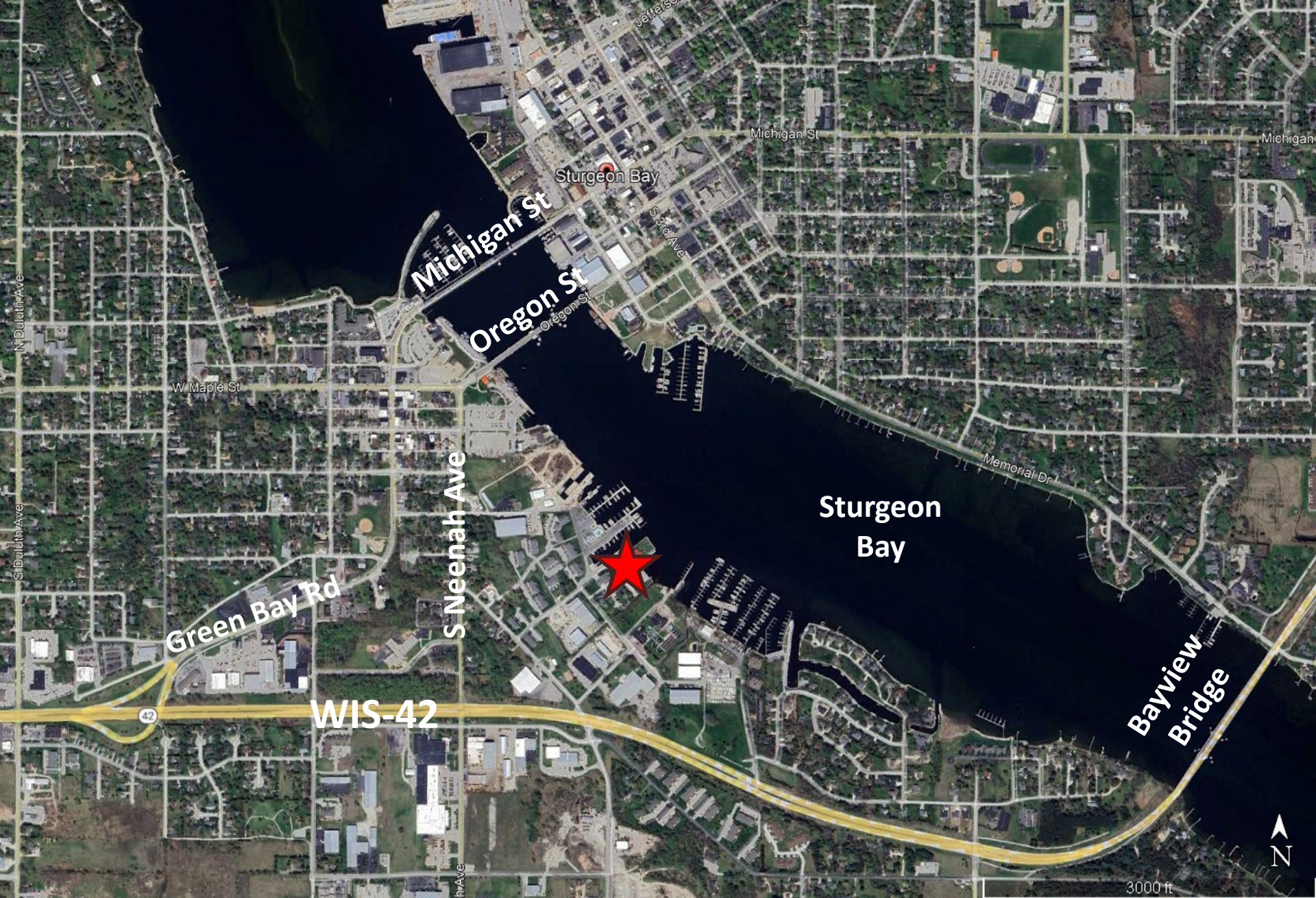
Stakeholder Interviews and Concept Exploration – Tuesday,
December 12, 2023

Community Visioning Session – Tuesday Evening, December 12,
2023

Concept Development and Refinement for Review – December,
2023

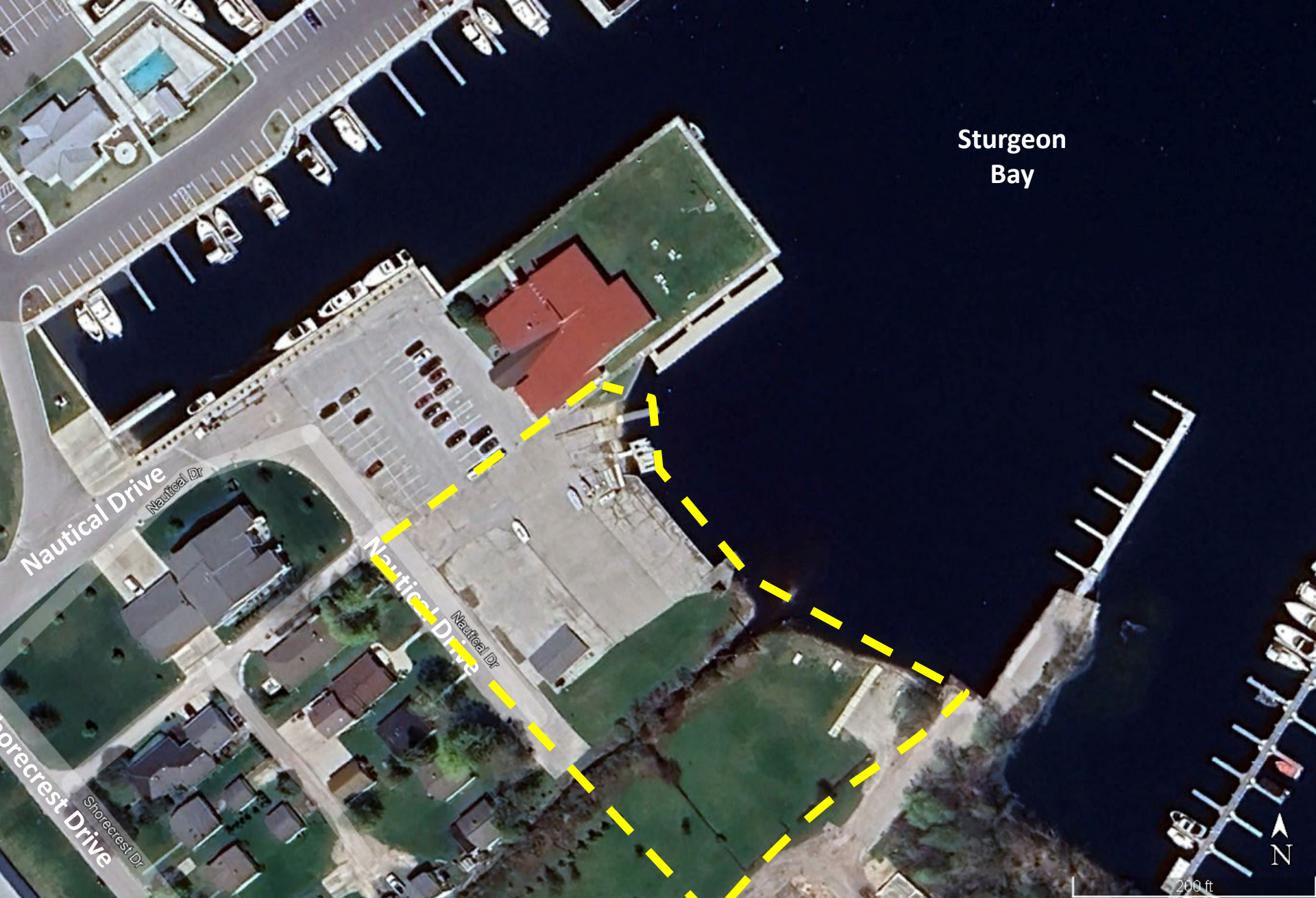
Summary Report – Early 2024





Sturgeon Bay Waterfront Improvements

Visioning



Sturgeon Bay

Nautical Drive

Nautical Dr

Nautical Drive

Nautical Dr

Shorecrest Drive

Shorecrest Dr



200 ft



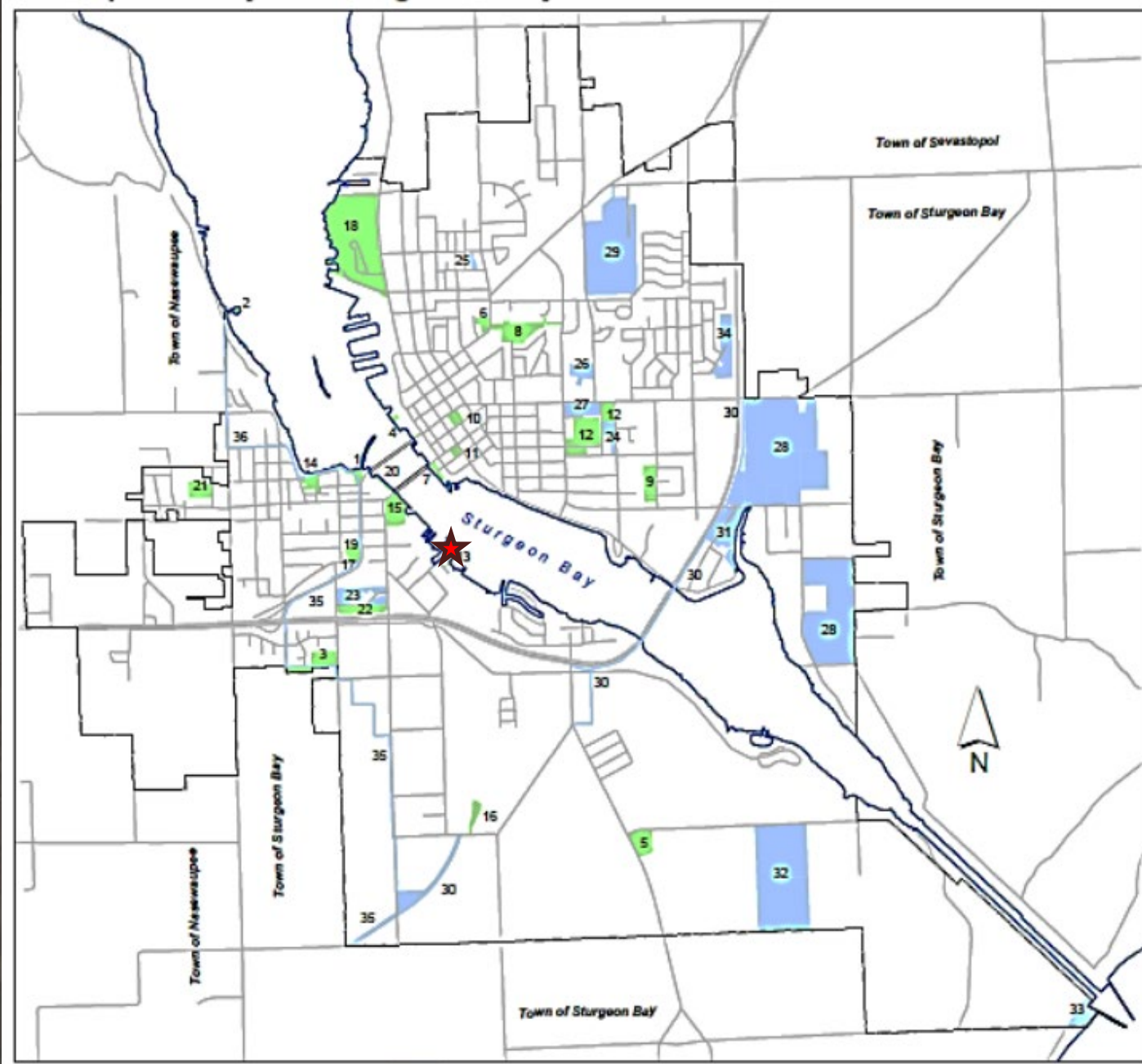












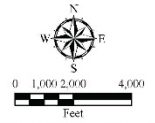
Trail Inventory and Connectivity

City of Sturgeon Bay

Door County, Wisconsin

- Base Map Features**
- State Highway
 - County Highway
 - Local Road
 - Railroad
 - City Boundary

- Existing Off-Road, Non-Motorized Trails
- Public Beach/Water Trail Access Point
- Trail Connectivity



Shared roadway connection to Water Trail Access

Shared roadway



Visual Preference Survey

- *What makes sense for this site?*
- *What does not fit?*





Sturgeon Bay Waterfront Improvements

Visioning



Sturgeon Bay Waterfront Improvements

Visioning



Sturgeon Bay Waterfront Improvements

Visioning





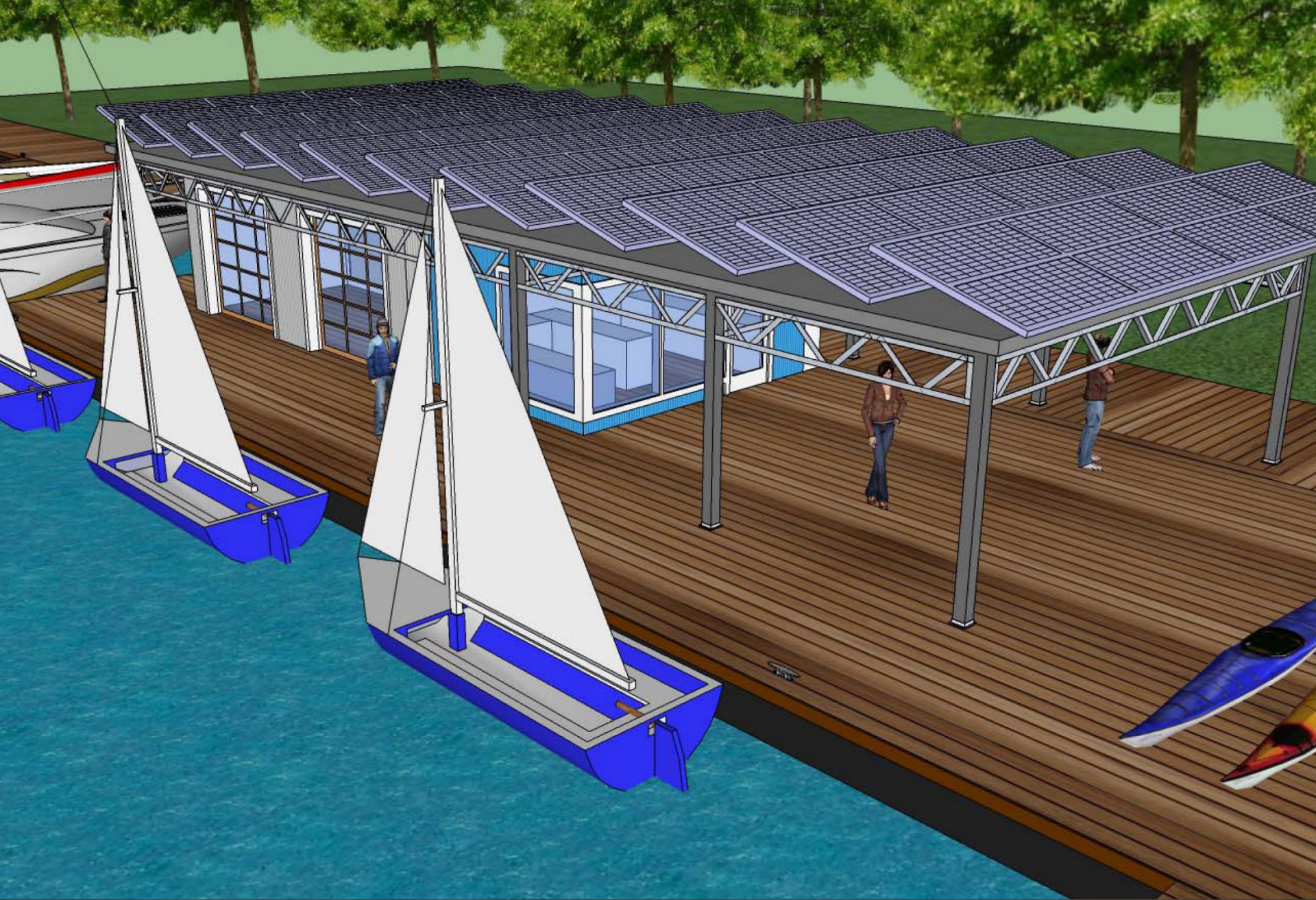
























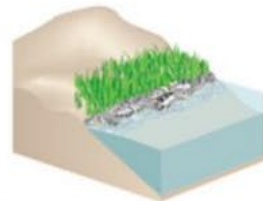
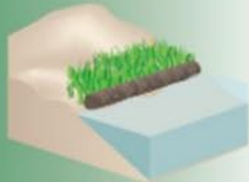
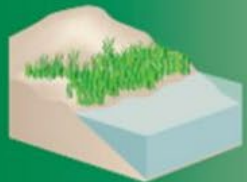




GREEN - SOFTER TECHNIQUES

GRAY - HARDER TECHNIQUES

Living Shorelines



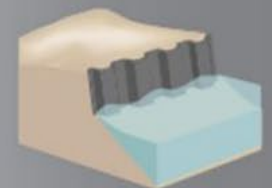
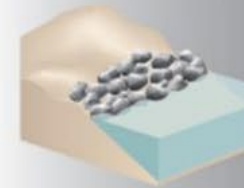
VEGETATION ONLY -
Provides a buffer to upland areas and breaks small waves. Suitable for low wave energy environments.

EDGING -
Added structure holds the toe of existing or vegetated slope in place. Suitable for most areas except high wave energy environments.

SILLS -
Parallel to vegetated shoreline, reduces wave energy, and prevents erosion. Suitable for most areas except high wave energy environments.

BREAKWATER -
(vegetation optional) - Offshore structures intended to break waves, reducing the force of wave action, and encourage sediment accretion. Suitable for most areas.

Coastal Structures



REVETMENT -
Lays over the slope of the shoreline and protects it from erosion and waves. Suitable for sites with existing hardened shoreline structures.

BULKHEAD -
Vertical wall parallel to the shoreline intended to hold soil in place. Suitable for high energy settings and sites with existing hard shoreline structures.











Thank You!

Please feel free to contact us at:

sfromson@edgewaterresources.com

gweykamp@edgewaterresources.com

